



# Translation Office 3000 3D+ Upgrade Guide

© Advanced International Translations

## 1 Installing and registering TO3000 3D+

TO3000 3D+ can be installed and run along with earlier versions of TO3000 for evaluation purposes.

To upgrade from earlier versions to TO3000 , you will need to do the following:

1. Install new TO3000 3D+ to the same PC as the old version opting "Do not install database";
2. Run TO3000 Database Converter;
3. Convert your database from a previous version of TO3000;
4. Register TO3000 3D+.

## 2 Converting from earlier versions of TO3000

Depending on the version of TO3000 you used before, you will have to do different things to transfer the data from your old database into TO3000 3D+

### TO3000 3D

The only thing you need to do in this case if create a backup file and restore it.

1. Launch your old TO3000 3D
2. Go to **Database Settings** and click **Backup** to create a BAK file (see [Backup](#)).
3. Launch TO3000 3D+
4. Go to **Database Settings**, click **Restore** and select the created BAK file to restore the database (see [Restore](#)).

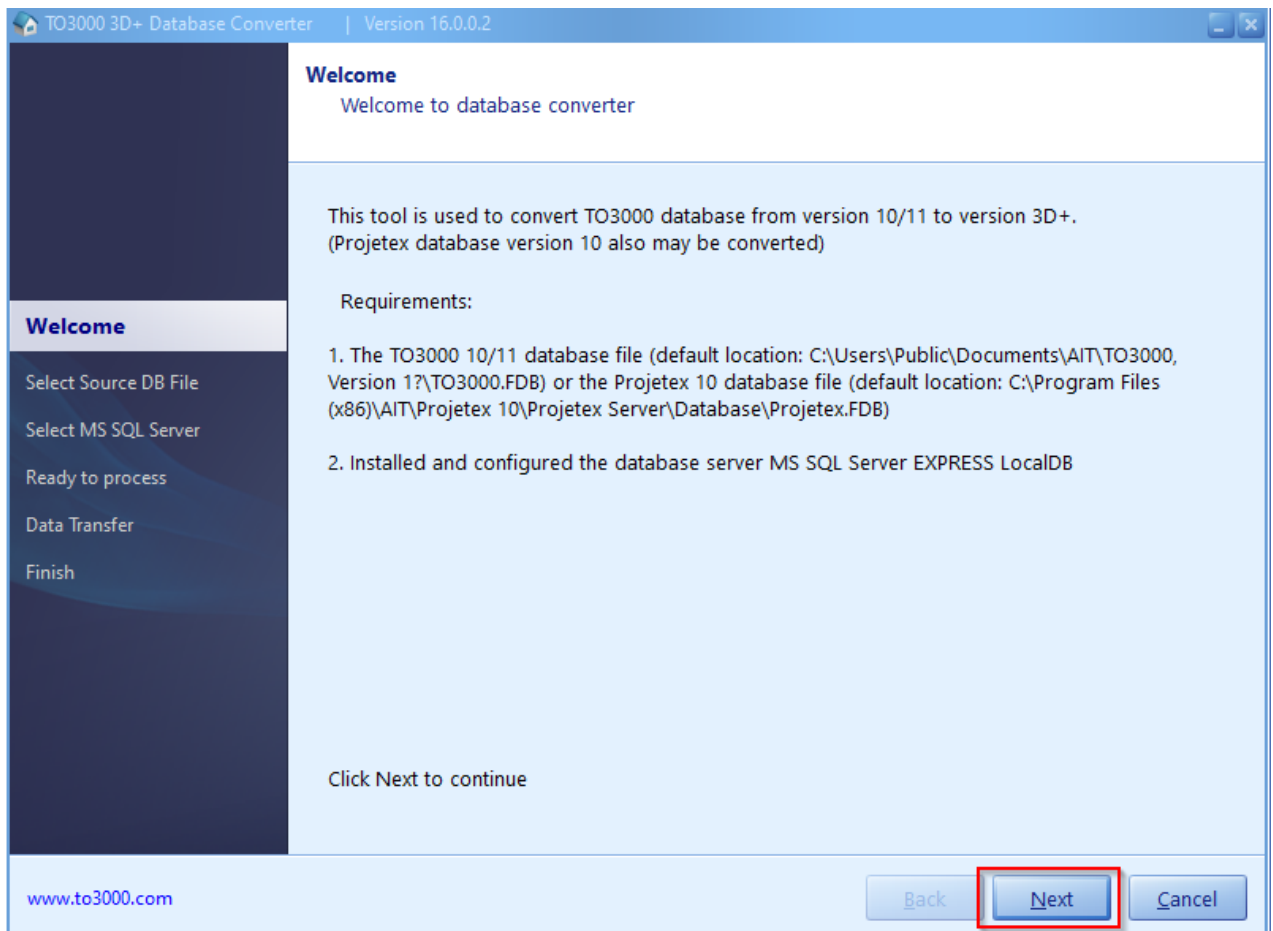
It is also possible to transfer Projetex database into TO3000 this way. You can create BAK files for Projetex on the "Database" tab of the Server Administrator utility on the Projetex server machine.

### TO3000 11 and 10

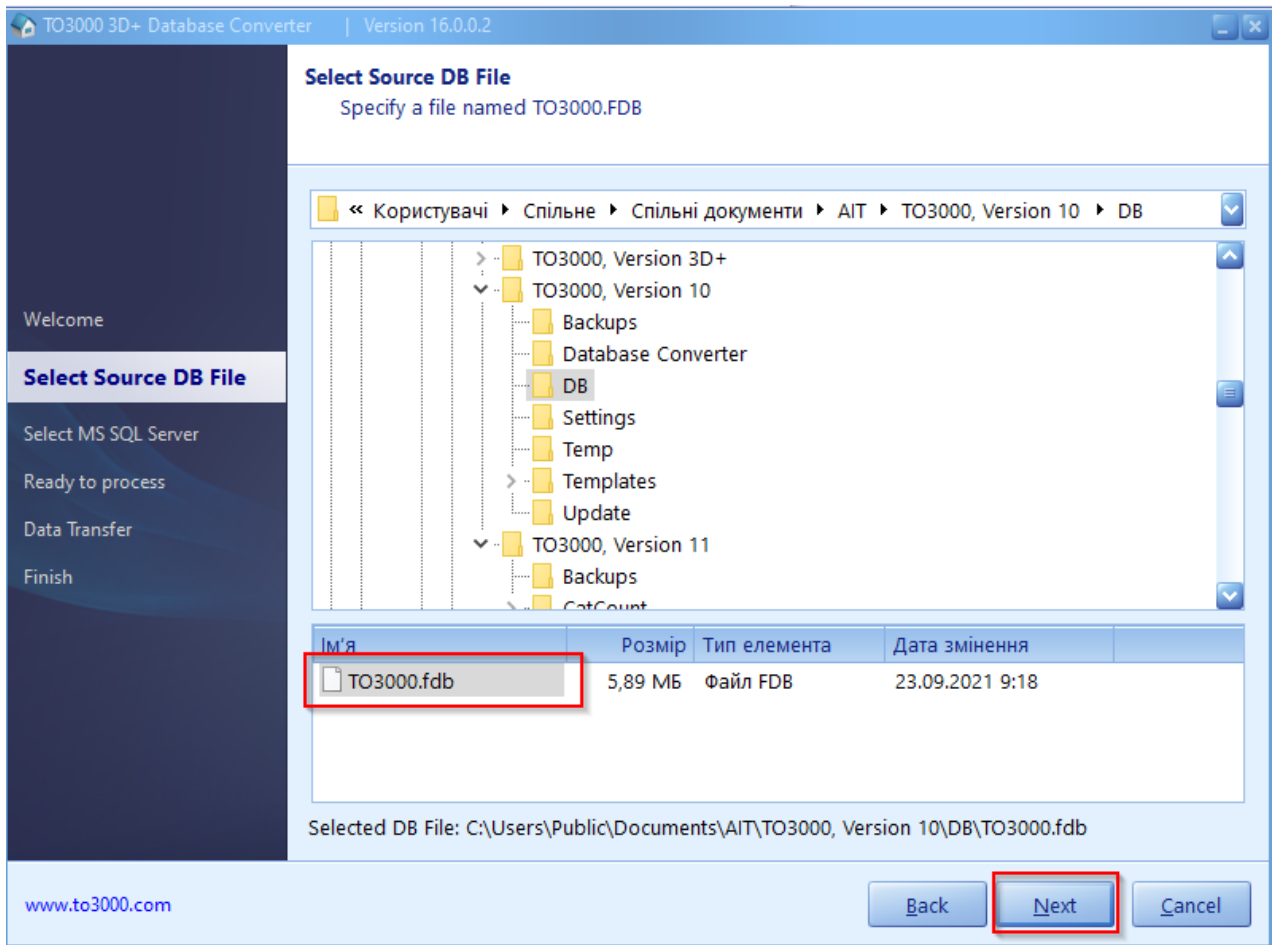
The TO3000 3D+ Database Converter is an application supplied in the standard TO3000 3D+ setup file. It allows to continue the use of a database from TO3000 10 or 11. Running the TO3000 3D+ Database Converter is a convenient way to upgrade a database from TO3000 11 to operate with TO3000 3D+.

1. Run the utility from either the startup menu or by double-clicking the TO3000\_3DConverter.exe file (the default location is ...\\AIT\Translation Office 3000 Version 3D\Admin\DBConverter).

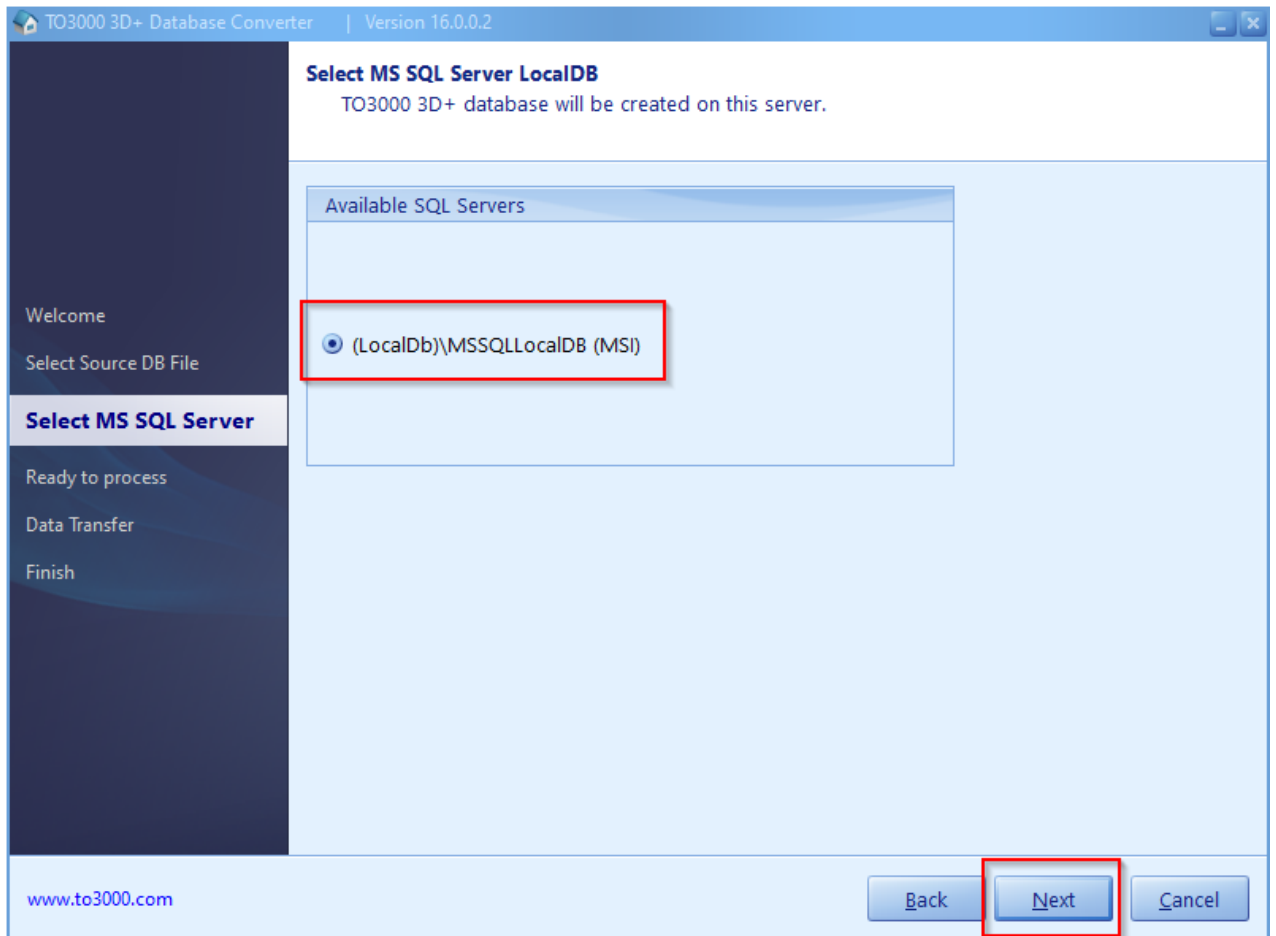
2. The TO3000 3D+ Database Converter will start with a list of requirements for its successful operation. Make sure that the database of your previous installation of TO3000 10 or 11 is present on the computer and that the MS SQL server is set up and configured. Then click the **Next** button.



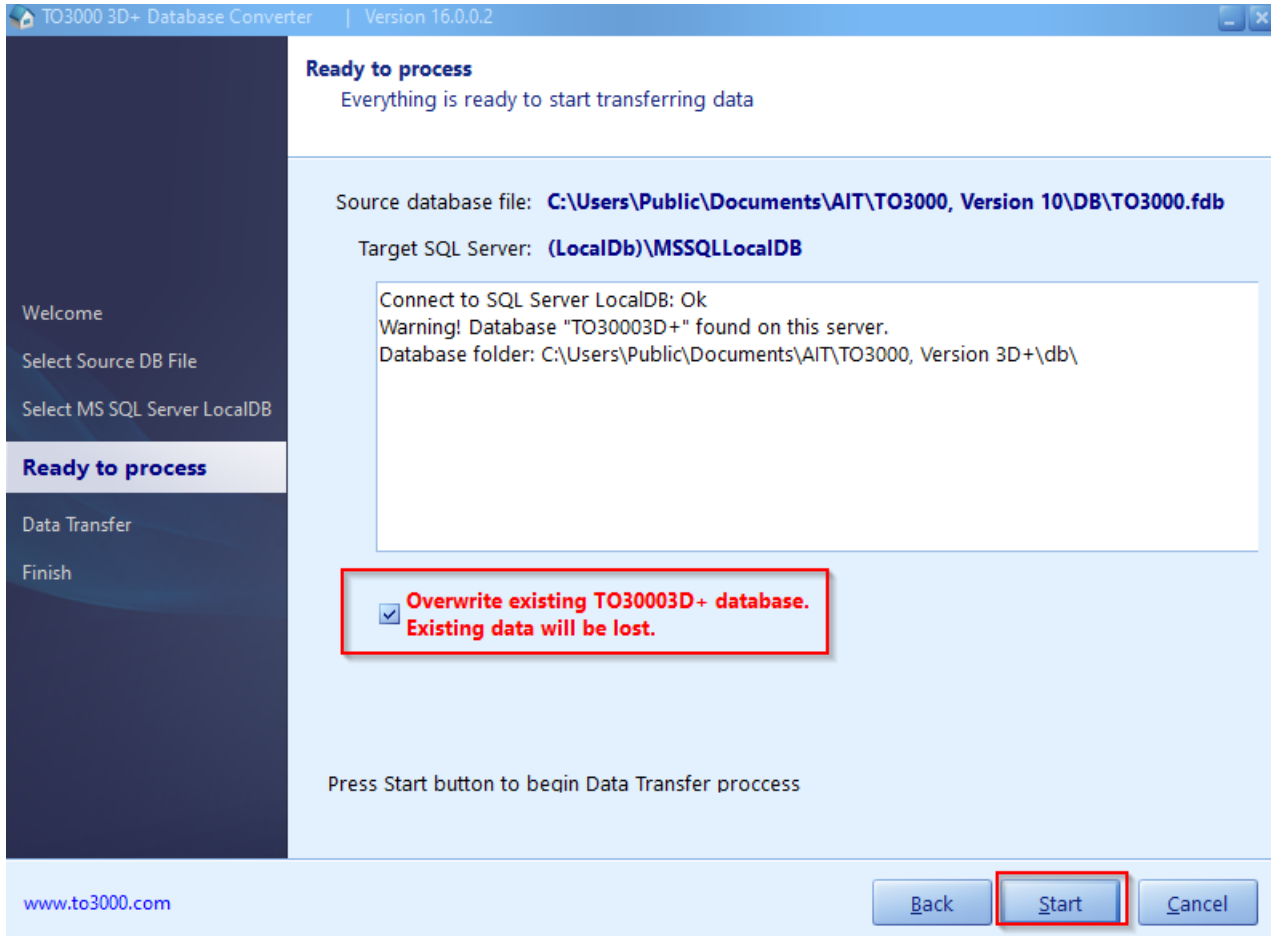
3. Navigate to the directory where your TO3000 10 or 11 database is installed. The database file should appear in the lower field. Select it and click **Next**.



4. Click the name of the MS SQL server that is available on your computer and click **Next**.



5. The utility will connect to the server. If you installed TO3000 3D+ with the demo or empty database, the utility will ask you to confirm that you wish to overwrite the existing database. Make a backup copy of it if you do not wish to lose it. When you are ready to proceed, check the box "**Overwrite existing TO3000 3D+ database.**" and click **Start**.




6. The Data transfer will proceed automatically. Then it is finished, click **Finish** to close the utility.

**TO3000 9 or older**

IF you are using a version of TO3000 older than 10, you can use the TO3000, Version 11 Database Converter first. It is an application supplied in the standard TO3000 3D+ setup. It allows to transfer a database from Translation Office 3000 (Versions 7, 8, 9 and 10) into a form compatible with the TO 3000 3D Database Converter.

1. Run the converter from either the startup menu or by double-clicking the DBConverter.exe file (the default location is ...\\AIT\\Translation Office 3000 Version 3D\\Admin\\DBConverter10\\).
2. Select your current version of the TO3000 database and click **Next** button.
3. Select the **Create TO3000 11 Database** radio button.
4. TO3000 11 Database Converter will automatically locate the installation of TO3000 and select the source database file to be transferred. If the program cannot find TO3000 database, click the **Browse** button, manually specify a path to the source database file and click the **Next** button.
5. Specify a directory in which the new database file should be generated and click the **Next** button.
6. Click the **Start** button to convert the database for TO3000 11.
7. Run the TO3000 3D+ Database Converter to convert the newly created database into one compatible with TO3000 3D+.

 **IMPORTANT NOTE:** Make sure that you convert the database under the same *Language for non-Unicode programs* as on your work computer. For example, if you have worked with French characters in a previous version of Projetex or TO3000, it is required to have French as the *Language for non-Unicode programs* in the *Region and Language* options of the computer, in which you perform the conversion of the TO3000 3D+ database.

**How to change System Locale:**

- You must be logged in with an account that has administrative privileges in order to change the system locale.
- The appropriate language packs should be installed on the operating system.

View the System Locale settings for Windows

1. Click **Start** then **Control Panel**
2. Click **Clock, Language and Region**
3. Windows 10, Windows 8: Click **Region**  
Windows 7: Click **Region and Language**  
Windows XP: Click **Regional and Language Options**  
The **Region and Language** options dialog appears.
4. Click the **Administrative** tab  
On **Windows XP**, click the **Advanced** tab  
If there is no **Advanced** tab, then you are not logged in with administrative privileges.
5. Under the **Language for non-Unicode** programs section, click **Change system locale** and select the desired language.
6. Click **OK**
7. Restart the computer to apply the change.

## 3 Copying TO3000 3D+ Workflow Files and Settings

If you are installing TO3000 3D+ on a new PC, ensure that *Business* folder used by previous version TO3000 is copied to the new location.

*Templates*, *CAT schemes* and *Local Custom Filter settings* will not be imported automatically during the upgrade. Please move them manually to TO3000 3D+ setup folder. Below please find locations of *templates*, *CAT schemes* and *Local Custom Filter settings* in TO3000 V8, TO3000 V9.0, TO3000 V10, TO3000, Version 11 TO3000 3D and in TO3000 3D+:

### Templates

- TO3000 V8: ...\\Translation Office 3000 V8\\Templates\\
- TO3000 V9.0: ...\\Translation Office 3000 Version 9.0\\Templates\\
- TO3000 V10: C:\\Users\\Public\\Documents\\AIT\\TO3000, Version 10\\Templates\\
- TO3000, Version 11: C:\\Users\\Public\\Documents\\AIT\\TO3000, Version 11\\Templates\\
- TO3000 3D: C:\\Users\\Public\\Documents\\AIT\\TO3000, Version 3D\\Templates\\
- TO3000 3D+: C:\\Users\\Public\\Documents\\AIT\\TO3000, Version 3D+\\Templates\\

### CAT schemes

- TO3000 V8: ...\\Translation Office 3000 V8\\System\\Schemes\\
- TO3000 V9.0: ...\\Translation Office 3000 Version 9.0\\Schemes\\
- TO3000 V10: C:\\Users\\Public\\Documents\\AIT\\TO3000 3D+\\Schemes
- TO3000, Version 11: C:\\Users\\Public\\Documents\\AIT\\TO3000, Version 11\\Schemes
- TO3000 3D: C:\\Users\\Public\\Documents\\AIT\\TO3000, Version 3D\\CatCount 4\\Schemes
- TO3000 3D+: C:\\Users\\Public\\Documents\\AIT\\TO3000, Version 3D+\\CatCount 4\\Schemes

### Local Custom Filter settings

- TO3000 V8: ...\\Translation Office 3000 V8\\Filters\\
- TO3000 V9.0: ...\\Translation Office 3000 Version 9.0\\Filters\\
- TO3000 V10: C:\\Users\\Public\\Documents\\AIT\\TO3000, Version 10\\Filters\\
- TO3000, Version 11: ...C:\\Users\\Public\\Documents\\AIT\\TO3000, Version 11\\Filters\\

**Note:** In *Windows XP* C:\\Users\\Public\\Documents\\AIT\\... folder corresponds to C:\\Documents and Settings\\All Users\\Documents\\AIT\\... folder.